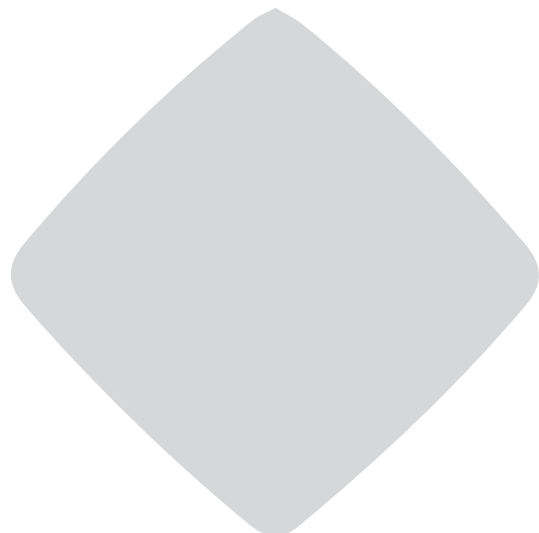
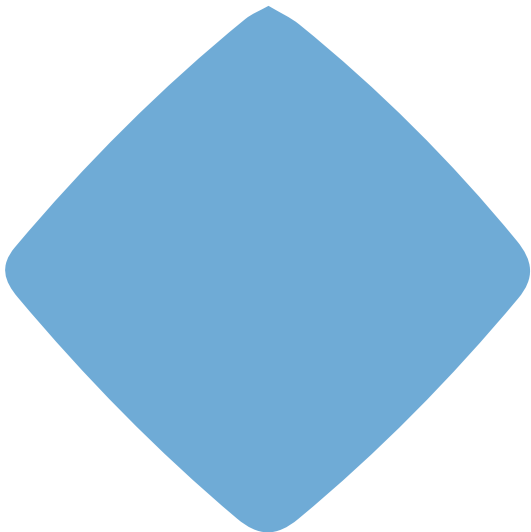




ELDAR
TRADE





BUILDING LONG-TERM RELATIONS



Meet with

Eldar Trade

By more than 17+ years of experience, **ELDAR TRADE** strictly follows global changes in iron and steel market trends with ability to offer from all Turkish/Chinese and all top-tier worldwide factories and stockholders according to its customer's needs factories according to its customer's needs.

We are experienced, creative and customer-centric service organization with integrated support teams that help our customers by clearly understanding their needs and providing them with valuable solutions to fulfill those needs.

We always work with prime factories in all over the world that allowing us to warrant the best quality with original certificated production in European quality standards and norms under most competitive conditions including fair prices and convenient payment terms.

As **ELDAR TRADE**, we are able to offer more than 250 types of steel products from steel billets to all finished products of the following steel grades: ASTM, BS, GOST, JIST, DIN, DSTU, etc. with largest range of sizes, standards, steel grades and variants of production. Also offers from production are always available as we can offer up to 1500-2000 m tons from stock all the time.

Our aim to build long business relations through the well organized structure and supply iron and steel products to worldwide customers from Turkish, Chinese and European manufacturers/stockholders.

IN OUR WELL-LOCATED DISTRIBUTORS, ELDAR TRADE ALSO PROVIDES SERVICES OF;

- Slitting
- Cut-to-length
- Edge-trimming
- Multi-blanking
- Shaping Processes (Trapeze, Corrugating, Ridge, Embossing)
- Polishing and Brushing
- Metal sheet extending-cutting
- Sand Blasting & Painting
- Structural Beam Splitting
- Long Products Saw Cutting



STEEL SERVICE CENTER

ELDAR TRADE punctually provides products with high-quality and in exact quantities in line with customers' needs. In this context, services such as constant technical and after-sales support is considered an integral part of customer -satisfaction oriented whole service approach.

What makes us global brand differently from being an ordinary trading company is that we guarantee well-understanding our customers' needs and strictly met their requirements in accordance to the regional or specific conditions.

Quality and innovations are steel rule of stable production and this is motto of **ELDAR TRADE** and our role has always been to find out the best possible options for our customers' demands concerning; the earliest delivery, the best quality and of course with competitive prices.







STEEL TRADING IS OUR BUSINESS



- Business ethics with Trust, Honesty, Responsibility and Accountability
- Combining Steel industry knowledge with experience in International Trade
- The right source with correct timing and competitive prices
- Partnering with the best suppliers Worldwide
- Proud to offer the highest quality with the best assistance



Worldwide Transportation Service



Break Bulk Shipment



Truck Shipment



Container Shipment



Railway Shipment

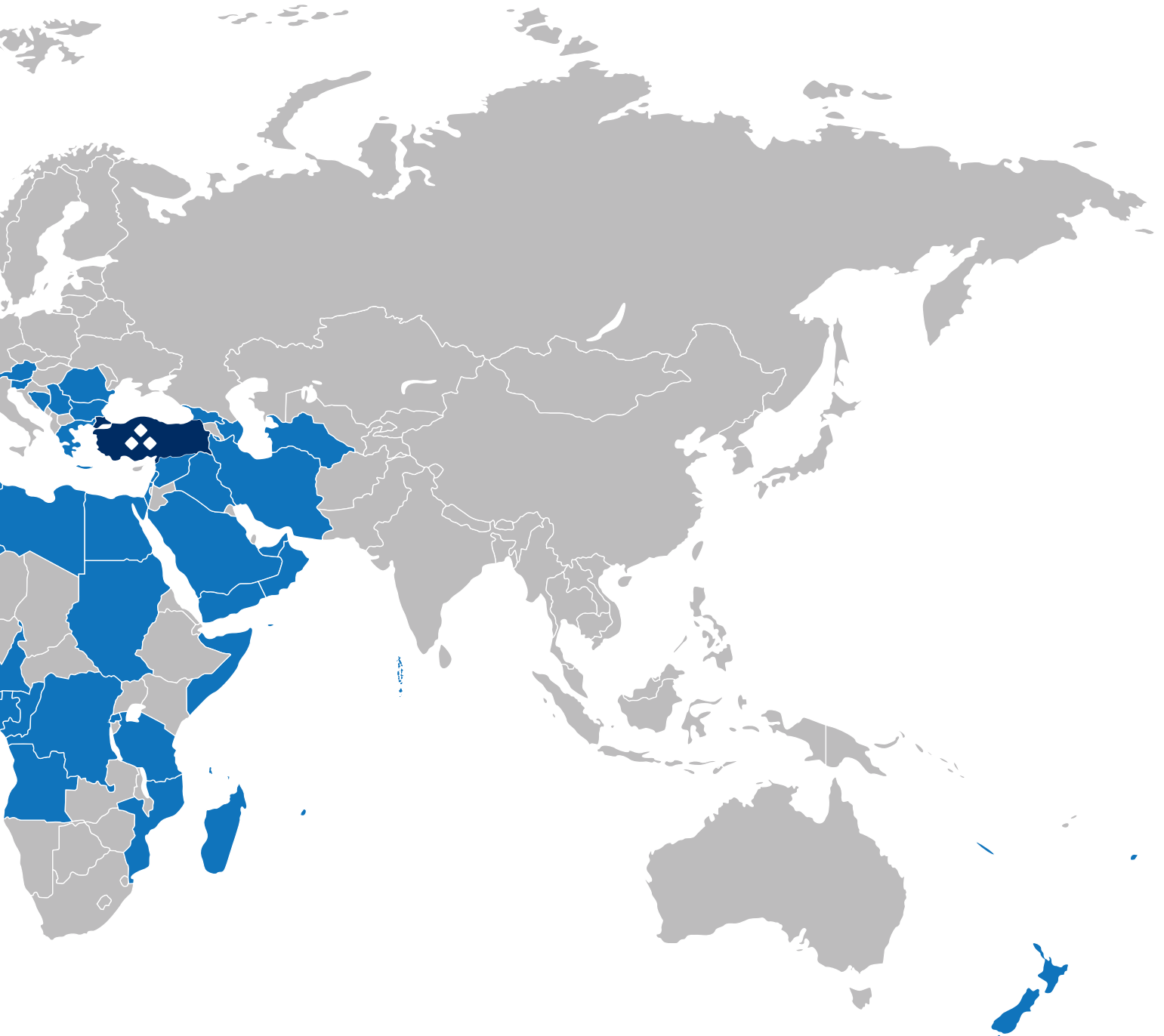
Stronger Than Steel





**EXPORT TO OVER
75+ COUNTRIES**

MORE THAN 17+ YEARS EXPERIENCE IN THE MARKET



Long Steel Products



Reinforcing Bars (Deformed/Plain)

QUALITIES: ASTM A615 GR 40/60/75/80, ASTM 706 GR60/80, BS 4482 GR250, BS449 B500B-C/GR250/GR460, NFA A35 FEE400/500/B500B, SS2 PB300/RB500W, JUS G31 12 SR24/30/30A/30B/35/40/50, TS 708 I/II/III/IV, DIN 488, ELOT 971/959/142-3 S400S/S500S/S200/B500C, UNE 36 068-94 B400S/B500S/B500SD, E449/E450/455/460 A400NR/500NR/SD, NS 3576 B500C, SS-ENV10080 B500BT, UNI B450C, STAS-438 PC52/60/OB37, PN-ISO 6935 BST500S, BDS 9252 B500B, NEN 6008 FEB 500 HWL, NBR 7480 CA-50, PNA 4 007 09 AP420DN/AP500DN, KS D 3504 SD400/500, SU 4466 S400/S400W, NCH 204 A440-280H/A560-380H/A630-420H, NP341.031 GR280/420/520

Size: 3.00mm – 60mm

Length : Available upto 18 meters Straight / Once-folded / Coils

Bundle : 1000 kg – 2500 kg

Wire Rod (Mesh/Drawing Qualities)

QUALITIES:

SAE 1005/1006/1008/1010/1012/1015/1018/1022/1026/1030/1035/1040/1045/1050/1065/1070, SAE1006C, S1/S2/S3/S2SI/S2MO, SG2, SG3, G1, 16MNCR5, 20MNCR4, 20NICROMO2-2, 17MNB3/B4, 20MNB4, 23MNB4, 27MNB4, 30MNB4, 38CR2, 34CR4, 25CRME4, 42CRME4, C18/35/40/45/50, C4D, C7D, C9D/10D/12D/15D/18D/20D/26D/32D/38D/42D/48D/50D/52D/55D/58D/60D/62D/66D/68D/70D/80D

Size: 5.00mm – 56mm

Coil Weights : 1500 kg – 3500 kg

ID/OD : 850 mm / 1250 mm



Wire Mesh

QUALITIES: TS4559, ASTM, DIN, BS, SS2, NF, ELOT, E450, NBR, UNIT, PN-ISO

Thickness: 3.50mm – 12mm

Eye Range: 75 – 300mm

Width/Length: 1000 – 2650mm / 2000 – 8000mm

WIRE (GALVANIZED/ZN-AL/BLACK ANNEALED/STRANDED)

QUALITIES: GR34/65/85/105/125/145/165, EN 10244-1/2, ASTM B232, ASTM A475, ASTM B500B, BS 215, IEC 1089, SAE 1006/1008/1045/1085, EN 50189, ASTM B498, ASTM A641/M

Size: 0,80mm – 10mm

Coating: 30-600g/m2



Profiles

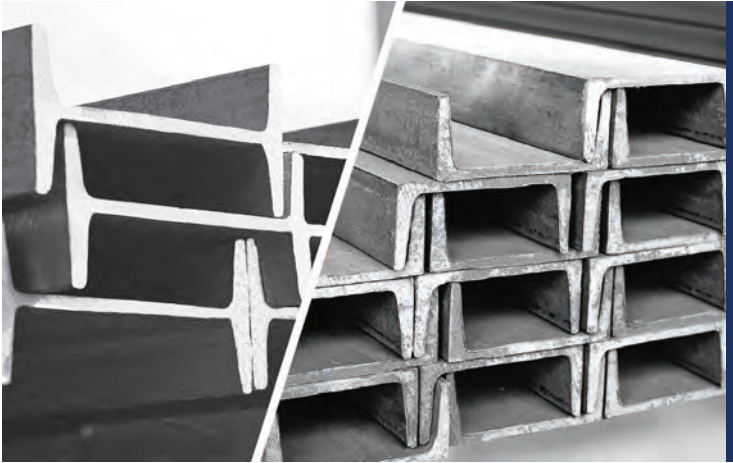
UPN, IPN Profiles

Standart : ASTM, BS, DIB, AISI, GOST, JIS, ISO, SAE, SI, TS, UNI, EURONORM, AFNOR (NF)

Quality : ST 37.2 / ST 44.2 / ST 52.3 DIN 1025, TS 910, ASTM A36 / ASTM A 572, JIS G 3101, BS 4360, 3 SP/PS GOST 380 88

Size : IPN: 80 mm – 500 mm
UPN : 30 mm – 500 mm

Length : 6 – 12 meters



IPE, IPEA, IPEAA, IPEAAAA Profiles

Standart : ASTM, BS, DIB, AISI, GOST, JIS, ISO, SAE, SI, TS, UNI, EURONORM, AFNOR (NF)

Quality : ST 37.2 / ST 44.2 / ST 52.3 DIN 1025, TS 910, ASTM A36 / ASTM A 572, JIS G 3101, BS 4360, 3 SP/PS GOST 380 88

Size :
IPE: 80 mm – 750 mm
IPEA: 80 mm – 300 mm
IPEAA: 80 mm – 200 mm
IPEAAA: 80 mm – 200 mm
IPEAAAA: 80 mm – 200 mm

Length: 6 - 12 meters



HEA, HEB, HEM Profiles

Standart : ASTM, BS, DIB, AISI, GOST, JIS, ISO, SAE, SI, TS, UNI, EURONORM, AFNOR (NF)

Quality : ST 37.2 / ST 44.2 / ST 52.3 DIN 1025, TS 910, ASTM A36 / ASTM A 572, JIS G 3101, BS 4360, 3 SP/PS GOST 380 88

Size : 100 mm – 1000 mm

Length : 6 – 12 meters



W, UAC, PFC Profiles

Standart : ASTM, BS, DIB, AISI, GOST, JIS, ISO, SAE, SI, TS, UNI, EURONORM, AFNOR (NF)

Quality : ST 37.2 / ST 44.2 / ST 52.3 DIN 1025, TS 910, ASTM A36 / ASTM A 572, JIS G 3101, BS 4360, 3 SP/PS GOST 380 88

Size :
W Profile : 150x100x10.4mm – 210x130x31.3mm
UAC: 30 mm – 70 mm
PFC: 75 mm – 300 mm
Length : 6 – 12 meters



Merchant Bars

Equal Angles

Standart : ASTM, BS, DIB, AISI, GOST, JIS, ISO, SAE, SI, TS, UNI, EURONORM, AFNOR (NF)

Quality : ST 37.2 / ST 44.2 / ST 52.3 DIN 17100, ASTM A36 / ASTM A 572, JIS G 3101, BS 4360, 3 SP/PS GOST 380 88

Size : 18 x 18 x 2 mm – 250 x 250 x 28 mm

Length : 6 – 12 meters



Flat Bars

Standart : ASTM, BS, DIB, AISI, GOST, JIS, ISO, SAE, SI, TS, UNI, EURONORM, AFNOR (NF)

Quality : ST 37.2 / ST 44.2 / ST 52.3 DIN 17100, ASTM A36 / ASTM A 572, JIS G 3101, BS 4360, 3 SP/PS GOST 380 88

Size : 10 x 3 mm – 200 x 40 mm

Length : 6 – 12 meters



Square Bars

Standart : ASTM, BS, DIB, AISI, GOST, JIS, ISO, SAE, SI, TS, UNI, EURONORM, AFNOR (NF)

Quality : ST 37.2 / ST 44.2 / ST 52.3 DIN 17100, ASTM A36 / ASTM A 572, JIS G 3101, BS 4360, 3 SP/PS GOST 380 88

Size : 8 x 8 mm – 80 x 80 mm

Length : 6 – 12 meters



Round Bars

Standart : ASTM, BS, DIB, AISI, GOST, JIS, ISO, SAE, SI, TS, UNI, EURONORM, AFNOR (NF)

Quality : ST 37.2 / ST 44.2 / ST 52.3 DIN 17100, ASTM A36 / ASTM A 572, JIS G 3101, BS 4360, 3 SP/PS GOST 380 88, C10/30/35E-R/40/45E-R/50/60, C22E/R, 11SMn30, 11SMn-Pb30, 11SMnPb37, 16MnCr5, 16MnCrS5, 17Cr3, 20MnCr5, 20MnCrS5, 20NiCrMo2-2, 30MnB5, 37Cr4, 37MnB5, 38B3, 41Cr4, 42CrMo4, 42CrMoS4, 44SMn28, 55Cr3, 080A15, 080A42, 080M40, 230M07, 1215, AISI A36/1008/1010/1018/1040/1045/8620 E335

Size : 6 mm – 80 mm

Length : 6 – 12 meters



Flat Steel Products

Hot Rolled Coils, Slits and Sheets

Standart : ASTM, BS, DIB, AISI, GOST, JIS, ISO, SAE, SI, TS, UNI, EURONORM, AFNOR (NF)

Quality : S235JR, S275JR, S355JR, Q195, Q235, Q345, SS400, SM490A, A36, A572 Gr. 50, A515 Gr.60, API 5L Gr.A, S355J2+N, P235GH, BV-A, ABS

Surface Treatment : Oiled or Non-Oiled, Pickled or not Pickled
Coil / Sheet Thickness : 1.10 mm – 25.0 mm Slit : 1.10 mm – 10.0 mm

Coil Width : 900 – 2000 mm Slit: 50 – 700 mm Sheet: 1000 - 2000 mm

Coil / Slit ID : 500 – 800 mm

Sheet Length : 1250 - 12000 mm

Coil Weight : 6 – 30 mtons

Slit: 2 – 6 mtons

Sheet: 1 – 5 mtons

Plate Thickness : 6.00 mm – 200 mm

Plate Width : 1500 – 4000 mm Length : 2000 – 12000 mton



Cold Rolled Coils, Slits and Sheets

Standart : ASTM, BS, DIB, AISI, GOST, JIS, ISO, SAE, SI, TS, UNI, EURONORM, AFNOR (NF)

Quality : DC01, DC03, DC04, DC05, DC06 according to EN standards / CD, DQ, DQSK according to ASTM standards

Surface Treatment : Oiled or Non-Oiled, Pickled or not Pickled

Coil / Sheet / Slit Thickness : 0.20 mm – 3.0 mm

Coil Width : 800 – 1550 mm Slit: 20 – 700 mm Sheet: 1000 - 1250 mm

Coil ID / Slit ID : 500 – 600 mm

Sheet Length : 1000 - 2500 mm

Coil Weight : 5 – 12 mtons

Slit: 1.5 – 9 mtons

Sheet: 1 – 5 mtons



Hot Dip Galvanized Coils, Slits and Sheets

Standart : ASTM, BS, DIB, AISI, GOST, JIS, ISO, SAE, SI, TS, UNI, EURONORM, AFNOR (NF)

Quality : DX51 D, DX51D, DX53D, DX54, S220GD, S250GD, S280GD, S320GD, S350GD according to EN standards / CD, LFQ, DQ, DQSK according to ASTM standards

Surface Type : Zero Spangle, Minimum Spangle, Regular Spangle

Surface Treatment : Oiled or Non-Oiled, Pickled or not Pickled

Hardness : Soft or Full Hard

Coating : Z30 – Z350

Coil / Sheet / Slit Thickness : 0.13 mm – 6.0 mm

Coil Width : 800 – 1550 mm Slit: 20 – 700 mm

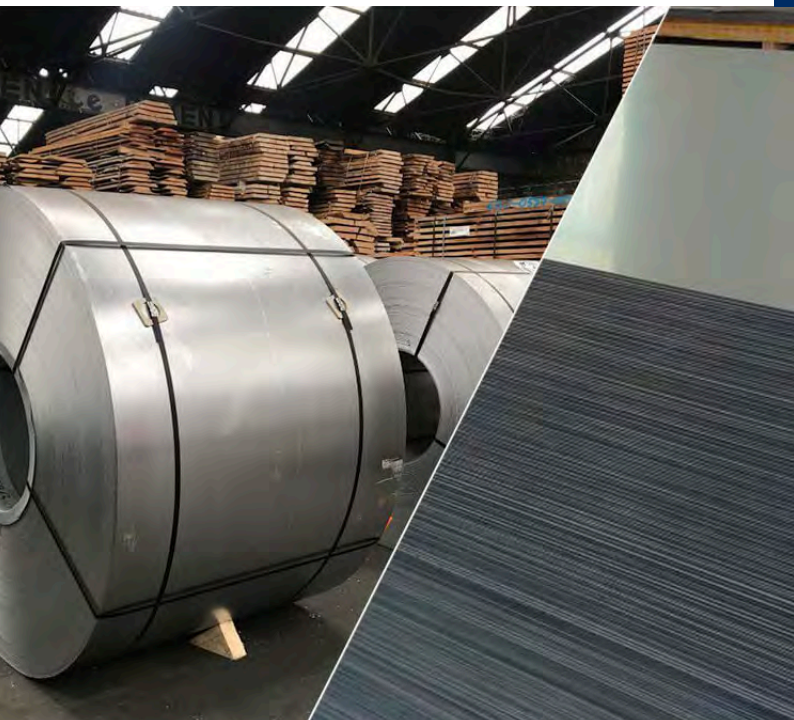
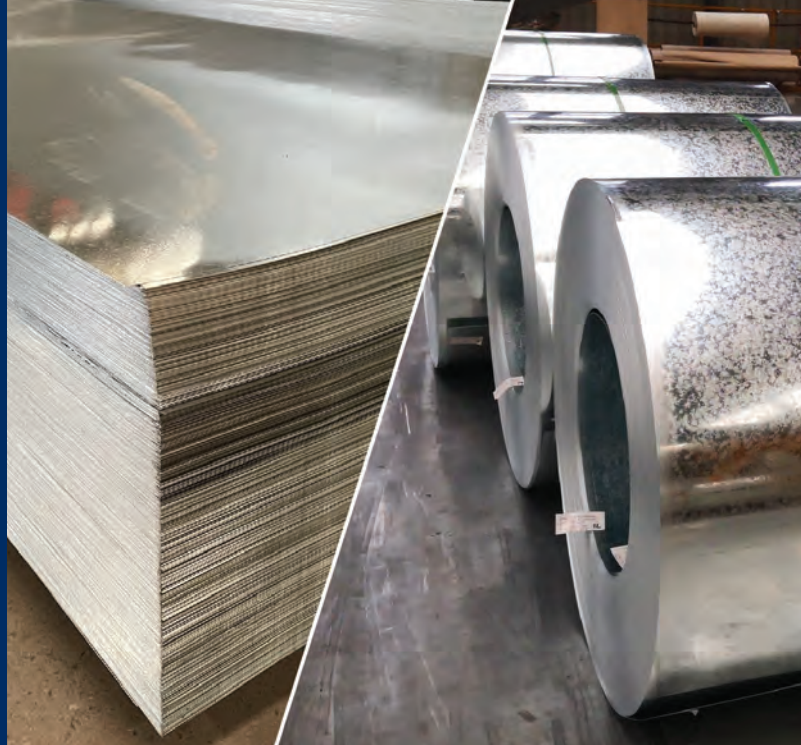
Sheet: 1000 - 1250 mm

Coil ID / Slit ID : 500 – 600 mm

Sheet Length : 1000 - 2500 mm

Coil Weight : 5 – 12 mtons Slit: 1.5 – 9 mtons

Sheet: 1 – 5 mtons



Aluzinc (Galvalume) Coils, Slits and Sheets

Standart : ASTM, BS, DIB, AISI, GOST, JIS, ISO, SAE, SI, TS, UNI, EURONORM, AFNOR (NF)

Quality : ASTM A792, JIS 3321

Surface Treatments : Oiled or Non-Oiled, With Antifinger or Without Antifinger Print

Surface Types : Minimum Spangle

Coating : AZ30 – AZ150 (55% Aluminium, 43,4% Zinc, 1,6% Silicon)

Coil / Sheet / Slit Thickness : 0.12 mm – 3.0 mm

Coil Width : 600 – 1250 mm Slit: 20 – 600 mm Sheet: 1000 - 1250 mm

Coil ID / Slit ID : 500 – 600 mm

Sheet Length : 1000 - 2500 mm

Coil Weight : 5 – 12 mtons Slit: 1.5 – 9 mtons Sheet: 1 – 5 mtons

Pre-Painted Coils, Slits and Sheets (PPGI)

Standart : ASTM, BS, DIB, AISI, GOST, JIS, ISO, SAE, SI, TS, UNI, EURONORM, AFNOR (NF)

Surface Coating Color : All RAL Colors

Back-side Coating Color : Two side primer + painted or top side primer + painted and back side primer

Painting : Top: 15 to 25 um (5 um + 12-20um) Back: 7 +/-2 um

Painting Types : Polyester, PVDF, Special Coatings

Surface Treatments : Protective Filmed or not

Type of Substrate : Hot Dipped Galvanised or Aluzinc / Galvalume

Coating : Z30 – Z275 for Galvanised, AZ40 – AZ180 for Aluzinc (Galvalume)

Coil / Sheet / Slit Thickness : 0.15 mm – 1.5 mm

Coil Width : 600 – 1250 mm Slit: 20 – 600 mm

Sheet: 1000 - 1250 mm

Coil ID / Slit ID : 500 – 600 mm

Sheet Length : 1000 - 2500 mm

Coil Weight : 5 – 12 mtons Slit: 1.5 – 9 mtons

Sheet: 1 – 5 mtons



Aluminium Coils, Slits and Sheets

Standart : ASTM, AISI, JIS, GB, DIN, EN, SUS
Qualities : 1000/2000/3000/4000/5000/6000/7000/8000 Series

Surface Treatments : Mill finish , Color coated(PVDF& PE), Stucco Embossed , Bright Polish, Anodizing , Mirror, Brush, Perforated, Tread plate , Corrugated

Surface coating: Flat, Color coated, With kraftpaper, embossed

Temper: Annealed, Strain-hardened, Thermally treated

Coating Mass: 4-38 Um

Coil / Sheet / Slit Thickness : 0.10 mm – 8.00 mm

Coil Width : 600 – 2600 mm

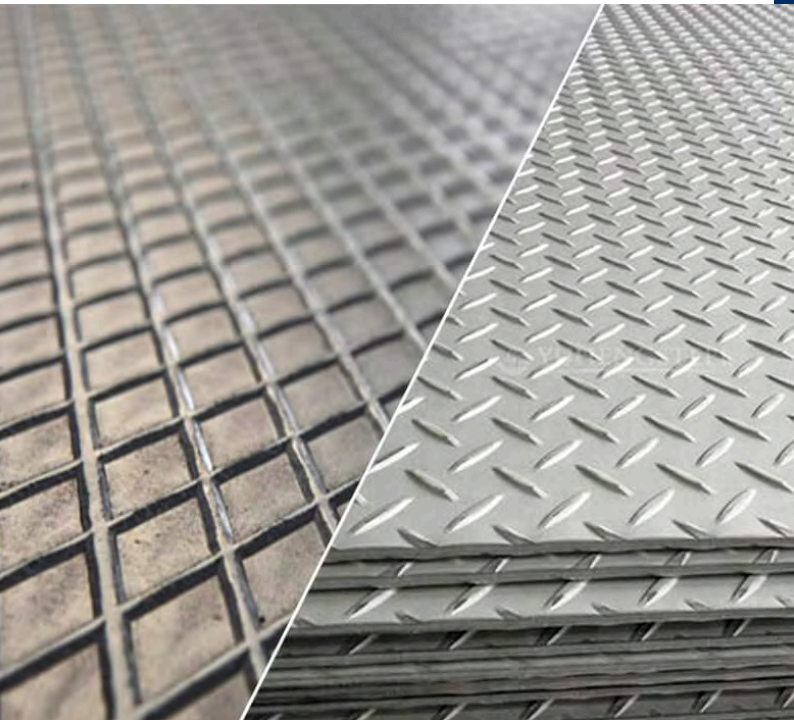
Slit: 20 – 600 mm

Sheet: 1000 - 1250 mm

Coil ID / Slit ID : 500 – 600 mm

Sheet Length : 1000 - 2500 mm

Coil Weight : 1 – 5 mtons



Chequered / Floor Sheets (Diamond, Tear-drop Pattern)

Standart : ASTM, BS, DIB, AISI, GOST, JIS, ISO, SAE, SI, TS, UNI, EURONORM, AFNOR (NF)

Quality : ASTM A615 GR40-60, BST 420S, BS 4449 (GR250-460), DIN 488, JIS G3112 (SD 30-35-40), SI 739 S400-S400W, FEB 44K, 3SP/PS-5SP/PS GOST 380 88, 35GS-25 G2S, GOST 5781-82, ST37-2 DIN17199, NFA 35015-16

Thickness : 1.40 mm – 16.00 mm

Width : 800 – 1550 mm

Length : 2000 – 12000 mm

Galvanized Corrugated, Trapezoidal / Roof Sheets

Standart : ASTM A 653/792, EN 10142/10427/10215, GB/T-2518/ 14798, JIS G 3302/3321

Shapes: Corrugated / Trapezoidal

Surface Treatments : Oiled or Non-Oiled, With Antifinger or Without Antifinger Print

Surface Types : Minimum Spangle, Regular Spangle

Hardness: CQ/FH

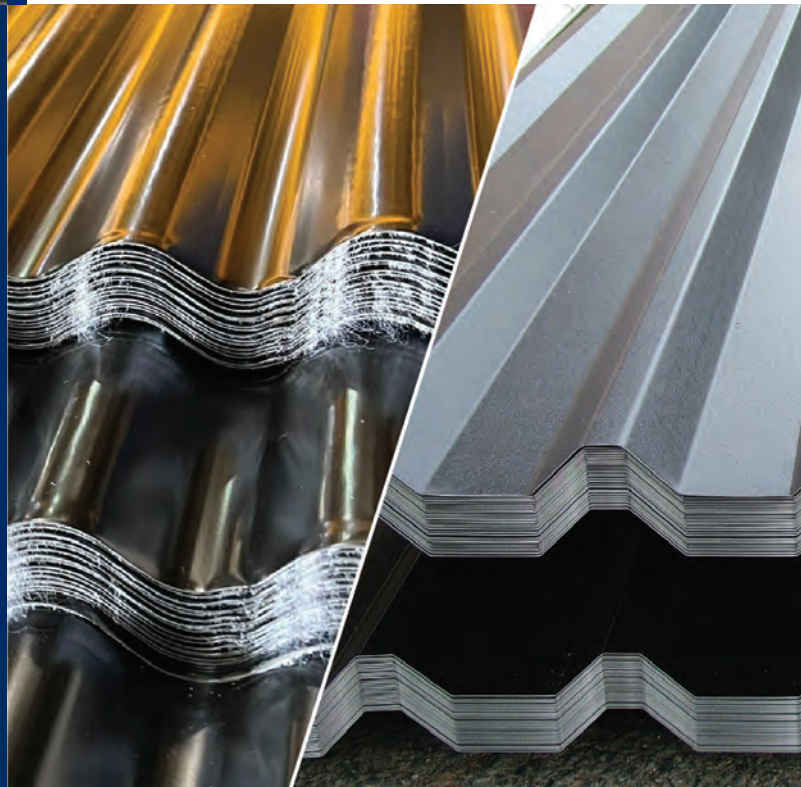
Coating : Zn 40 g/sm-275 g/sm – Alu-zinc 40-150 g/sm

Thickness : 0.125 mm – 0.70 mm

Width : 665mm – 1000mm

Length : 1000mm – 5900mm

Weight : 2-5 tons



Tubular Steel Products

Hollow Sections (Square and Rectangular)

Standart : ASTM, BS, DIB, AISI, GOST, JIS, ISO, SAE, SI, TS, UNI, EURONORM, AFNOR (NF)

Quality : ST 37.2 / ST 44.2 / ST 52.3 DIN 2395-1, DIN 59411, TS EN 10305-5, BS 6363, NFA 49-145, NFA49-541, TS EN 10219, ASTM A-500, UNE 36-537, SI 1458

Size: Square: 10 x10 mm – 500 x 500 mm
Rectangular: 10 x 20 mm – 400 x 600 mm

Surface : Black, Galvanised, Anti-rust painted (GPP)

Thickness : 0.70 mm – 16 mm

Length : 4 – 15 meters



Steel Pipes - ERW/SAW/SEAMLESS (Structural, Water& Gas, Casing)

Standart : ASTM, BS, DIB, AISI, GOST, JIS, ISO, SAE, SI, TS, UNI, EURONORM, AFNOR (NF)

Quality : ST 37.2/44.2/52.3/37.4/35/35.8/44.4/45/45.8/52.4, DIN 2440/1387/DIN 2999-2986/2458-1615 & 1626/2448-1629/2391, EN 10217/39/10219-2/10255/10208-2/TS EN 10224/TS EN 10219, ISO 65, NFA49-145, ASTM A53/A500/Gr A / B / C – ASTM A 106/Grade A-B ASTM A139/A 252, BS 1187/1387/6363/6323/1139/3601/534/534, SI 1458, 15 Mo 3, 10 CrMo 910, 13 CrMo 44, , H-40, J-55, K-55, N-80 API 5CT, Gr A / B, API 5L X42, X46, X52, X56, X60, X65, X70, GOST 20295, ISO 3183, AWWA C200/C208, UNI 6363, S185

Size :

ERW: 10 mm – 323,9mm (1/2" – 12")

Thickness : 0.70 mm – 12 mm

Length : 4 – 15 meters

Surface : Black, Galvanised, Anti-rust painted

Seamless: 19 mm – 355,6mm Thickness : 2.30 mm – 45 mm

Length : 4 – 15 meters

SAW : 219,1mm – 4064mm (8" – 160")

Coating Types : Black, Bare, Varnish, Anti-rust, 3PE, 2PE, FBE

Coating Standarts: AWWA C-210, NFA 49709, TS EN 10289, AWWA C-213, API 5L7, NACE RP 0394, BS 5493, DIN 30670, NFA 49710, TS 5139, UNI 9099, DIN 30678, NFA 49711, TS 4356, DIN 30673, BS 534, AWWA C-203, DVGW GW 340

Lining: AWWA C-210, NFA 49709, API RP 5L2, TS EN 10289, DIN 30673, BS 534, AWWA C-205, BS 534, EN 10298

Joint : Welded Joint, Spherical Socket Joint, Spigot and Socket Joint, Flanged Joint

Thickness : 4 mm – 26 mm

Length : 6 – 18 meters



Semi Finished Steel Products

21

Steel Billets

Standart : ASTM, BS, DIB, AISI, GOST, JIS, ISO, SAE, SI, TS, UNI, EURONORM, AFNOR (NF)

Quality : ASTM A615 GR40-60, BST 420S, BS 4449 (GR250-460), DIN 488, JIS G3112 (SD 30-35-40), SI 739 S400-S400W, FEB 44K, 3SP/PS-5SP/PS GOST 380 88, 35GS-25 G2S, GOST 5781-82, ST37-2 DIN17199, NFA 35015-16

Size :

Square Billets; from 100x100mm to 200x200mm

Round Billets; from 120mm to 270mm

Length : Available up to 12 meters



Steel Slabs

Standart : ASTM, BS, DIB, AISI, GOST, JIS, ISO, SAE, SI, TS, UNI, EURONORM, AFNOR (NF)

Quality : DIN 1616 GR B, DIN 1623 ST 12, DIN 1623 UST 12 AND EQUIVALENTS

Size :

Thickness: Mainly between 185 – 200 mm

Width: Mainly between 840 – 1235mm

Length : Available up to 12 meters

Steel Blooms

Standart : ASTM, BS, DIB, AISI, GOST, JIS, ISO, SAE, SI, TS, UNI, EURONORM, AFNOR (NF)

Quality : ASTM A615 GR40-60, BST 420S, BS 4449 (GR250-460), DIN 488, JIS G3112 (SD 30-35-40), SI 739 S400-S400W, FEB 44K, 3SP/PS-5SP/PS GOST 380 88, 35GS-25 G2S, GOST 5781-82, ST37-2 DIN17199, NFA 35015-16

Size : Mainly in sizes of 200x200mm, 260x260mm, 260x340mm, 265x335mm

Length : Available up to 12 meters



We are based on the belief that our clients' needs are of the utmost importance.

As far as we specialized in Steel, Eldar Trade also provides Non-steel materials to all customers such as;


- **Machinery** (Cut-to-length / Slitting lines, ERW Tube lines, Trapezoidal/ Corrugated sheet lines etc.)
- **Food** (Wheat, Rice, Spices, Cooking oil, Flour, Pasta, Chocolates and candies, Biscuits, Juices etc.)
- **Building & Construction materials** (Plywood, Plastic pipes, Ceramics, Marbles and Tiles, Bricks etc.)
 - **Cement, Gypsum**
- **Household items** (Carpets, Plastic chairs, Garbage bins, Luggages etc.)
 - **Textile** (Clothing and Home)
 - **Hand tools**
 - **Spare parts**
 - **Glassware**

Besides supplying all of above materials one by one, Eldar Trade has capability of combining these materials with Steel products in the same container to save on extra freight costs as well.

We give personal attention to our customers' needs and we set our standards high.

By all means, we take pride in delivering only the highest quality service that exceeds our customers' expectations.



 +90 216 449 33 49

 info@eldartrade.com

 www.eldartrade.com

 Fenerbahçe Mah. Bedri Rahmi Eyübođlu Sk.
No:10/1 D:1 Kadıköy/Istanbul, Turkey



ELDAR

TRADE

www.eldartrade.com